

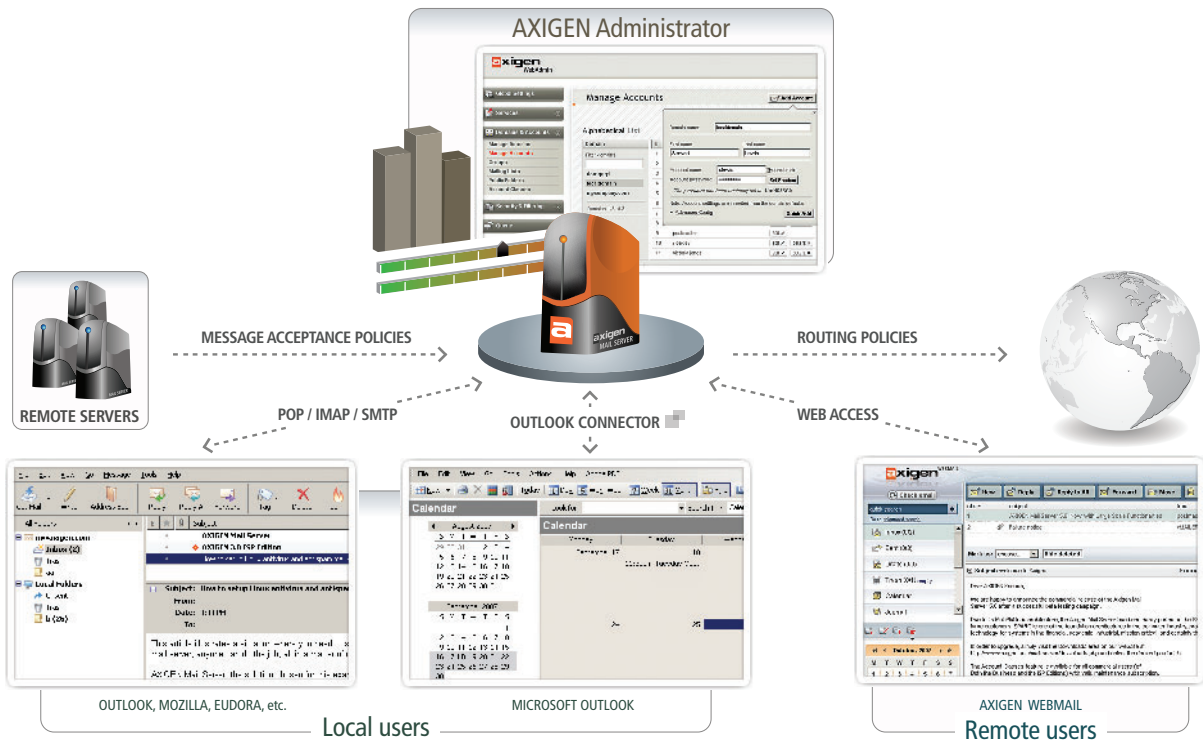
# axigen MAIL SERVER

EASY. SECURE. POWERFUL. MESSAGING



## Business Edition

A complete messaging solution, AXIGEN Mail Server Business Edition provides an answer to all challenges of a dynamic business environment. Designed for Small and Medium Businesses, this edition makes administration and user access easier, offering full-scale security features. Additionally, the localized WebMail module enables full access to one's email, regardless of location.



### Main features & benefits

#### Main server components:

SMTP / POP3 / IMAP / WebMail Integrated Services	✓
Web Personal Organizer (Calendar / Journal / Tasks / Notes)	✓
Outlook Connector / Active Directory Integration	✓
Server Administration (Web Administration and Command Line)	✓
Account Classes	
Efficient Queue & Storage Management	
Monitoring & Control (comprehensive reports, statistics, logging)	
Routing Policies	
Security policies, multiple AntiVirus & AntiSpam support	✓
Mailing Lists	✓
Automatic Migration	✓
Backup & Restore	✓
Clustering support - for large scale solutions:	add-on
Delegated Administration	
Front-end / back-end servers, RHCS integration	
LDAP authentication & routing	
Technical Support 24x7 & Software Maintenance*	✓

\*) Free for one year

### BUSINESS COMMUNICATION MADE EASY

- ⊛ The integrated Personal Organizer helps you manage your time efficiently, either remotely (through WebMail with an Outlook-like familiar interface) or locally (using MS Outlook). It provides features such as calendar, notes, tasks, meeting requests, etc.
- ⊛ Manage all your personal, public and domain contacts in an efficient way
- ⊛ Create user groups and mailing lists in order to simplify your communication flow
- ⊛ Collect emails from external email accounts using the Remote POP capability

### OVERALL SECURITY TO PROTECT YOUR BUSINESS

- ⊛ Multiple AntiVirus and AntiSpam scanners support, can be applied selectively to groups of users
- ⊛ Anti Impersonation policies, preventing inside threats
- ⊛ Implement specific company security policies through various options, such as Blacklists, Whitelists, Message Acceptance Rules, etc.
- ⊛ Specific AntiSpam mechanisms available, such as Sender and IP validation (Domain Keys compliant; Sender Policy Framework)
- ⊛ Prevent users from setting unsafe passwords through Password Enforcement Policies

### POWERFUL TECHNOLOGY AT YOUR SERVICE

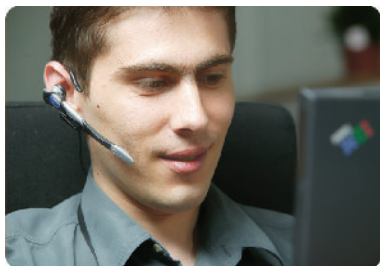
- ⊛ Comprehensive server charts and statistics to monitor your server's health
- ⊛ Efficient storage management: single storage of emails sent to multiple recipients (particularly useful for distribution lists and groups)
- ⊛ Incremental Backup and simple Restore utilities
- ⊛ Automatic migration tools

# BUSINESS MESSAGING SOLUTIONS

Try out an integrated email server solution designed to be fast, reliable and secure. Discover the benefits provided by the AXIGEN innovative multiplatform server technology.

**axigen**  
MAIL SERVER

## FIRSt Support, yours from the start



### 24x7 Free, Immediate Response Time Support

- ⌚ Human response time within a 3h average by email
- ⌚ Extensive technical support - including operating system and connectivity troubleshooting
- ⌚ Support in local language by local partners
- ⌚ Multiple additional resources (KnowledgeBase, Online Documentation, Forum, Newsletter, etc)

Additionally, you may choose **customized support** to have:

- ⌚ Phone Support
- ⌚ Monthly service report
- ⌚ FREE call-back hotline
- ⌚ Implementation: support and training

## Flexible licensing programs

- ⌚ "Pay for what you use" Licensing Policy - tailored to customer revenue stream with volume cost savings
- ⌚ OS independent licensing - you can switch between operating systems with no additional charge
- ⌚ Tailored solutions for educational and government institutions

## Strong customer retention policy

- ⌚ Perpetual License - it has a life time usage period
- ⌚ Low operating costs - yearly software maintenance for as low as 25% of the license price
- ⌚ Easy license upgrade and update procedures
- ⌚ Migration tools and services available

## Reviews & Testimonials

“ If you ask us which of the test candidates was our favourite, we would have to go for the AXIGEN Mail Server. [...] If you are looking for a good mail server with excellent WebMail support, you will be very happy with the AXIGEN Server. ”

Linux Magazine

“ The support service is really awesome, the best I have ever experienced from any company. You get an answer within the hour, even when you are a non-paying customer. I even got replies in weekends in the middle of the night. Really amazing! ”

Nick Snels  
Jobaria, Belgium

## CONTACT INFO

### GECAD TECHNOLOGIES

10A DIMITRIE POMPEI BLVD., 020337 BUCHAREST 2,  
ROMANIA

Tel: +40 21-303 20 80

Fax: +40 21-303 20 81

Email: [sales@axigen.com](mailto:sales@axigen.com)

[www.axigen.com](http://www.axigen.com)



## ASK FOR EVALUATION

All AXIGEN product kits can be downloaded as evaluation versions for 30 days:

- All features enabled
- **Unlimited** users
- **Unlimited** domains
- FIRSt Support included



[www.axigen.com/download/](http://www.axigen.com/download/)

## Operating Systems

RedHat Enterprise, Fedora, CentOS, SuSE, Gentoo, Novell, Ubuntu, Debian, Mandriva, Slackware, Yellow Dog (PowerPC), FreeBSD, NetBSD, OpenBSD and Solaris (x86, SPARC)

## ADMINISTRATION

- Remote Web Administration (WebAdmin)
- Automated Operations (CLI)
- User groups
- Account Classes (dynamic inheritance)

## REPORTING AND STATISTICS

- Graphic charts
- Traffic statistics
- Detailed storage reports
- Multiple log levels
- Remote log collection

## USER RELATED

- Personal Organizer (Calendar, Journal, Tasks, Notes)
- Address Book (personal, public and domain)
- RPOP (Remote POP connections)
- Public Folders
- Rules & filters (Outlook-like)
- Out-of-office messages
- Individual Blacklist
- Multiple languages & skins
- Personalized user signature

## SECURITY / ANTIVIRUS / ANTISPAM

- Multiple AntiVirus & AntiSpam support
- Anti-Impersonation policies
- Access Control / Whitelisting / Blacklisting
- Restrict maximum simultaneous connections
- Selectively restrict maximum messages size
- Encryption & Authentication
- Secure Password Enforcement
- SPF, DomainKeys compliant
- Security policies

## ARCHITECTURE

- SMTP / POP3 / IMAP / WebMail
- Outlook Connector (2007 compatible)
- Mailing Lists
- Automatic Migration
- Backup & Restore
- WebMail rebranding support

## CLUSTERING ADD-ON

- Delegated Administration
- Multi-tier setup (front-end & back-end)
- LDAP authentication and routing
- SMTP routing to back-end
- POP3 / IMAP Proxy
- RH Cluster Suite Integration